

Property 1651263742



Number of beds: 2
Bedrooms: 1

Bathrobes and Slippers

Slippers only.



Air Conditioning Throughout
Included in the price.



Air Conditioning In The Bedrooms
Included in the price.



Hair Dryer In The Bathrooms



Dryer

Safe

In all bedrooms.



Fibre Internet



Internet in the garden and common areas

The maximum distance from the city centre is 1.5 km
The property is located 1.4 km from the centre of Venice.



Dishwasher



Washing Machine

Mattress sizes and bed dimensions

1 double bedroom, with non-separable king-size bed.

Bath amenities


Initial supply only. Refill available on request.

 Heating

Included in the price.

 Concierge Service

Concierge service from 9:00 am to 5:00 pm, available by phone and on site.
Included in the price.

 Housekeeping

Available on request, at an additional cost.

Smart TV

 Satellite TV

 Wi-Fi

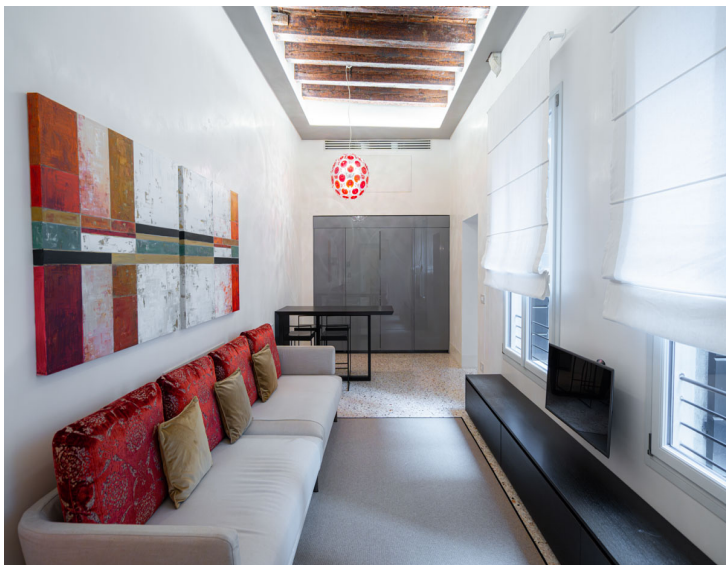
*** Please note:** the included amenities may vary according to final agreement, make sure to check your contract for complete list.

NEARBIES

Venetian Palace is 14 km from Venice Marco Polo Airport, 123 km from Verona Villafranca Airport (also known as Valerio Catullo Airport), 156 km from Bologna Guglielmo Marconi Airport, 259 km from Milan Linate Airport, and 311 km from Milan Malpensa Airport. The palazzo is just 1,2 km on foot from the very centre of Venice. Treviso is 42 km from the property, Padua 47 km, Vicenza 75 km, Verona 121 km, Mantua 156 km, and Lake Garda 183 km.

FEATURES

- 1 Double Bedroom
- 1 Private Bathroom
- Fully Equipped Kitchen with Dining Area
- Cosy Lounge Area with Comfortable Armchairs
- Additional Lounge Area with Sofa
- Bespoke Kitchen Cabinetry and Counter with Bar Stools
- Iron and Ironing Board
- Nespresso Coffee Machine and Kettle



DESCRIPTION

VENETIAN PALACE – CANNELLA APARTMENT – VENICE

1 Bedroom

Location and Surrounding Area

Situated in the vibrant San Polo district of Venice, Venetian Palace enjoys a prime location just a short stroll from the city's most iconic landmarks, bustling squares, and charming canals. Nestled in one of Venice's most sought-after neighbourhoods, the palazzo offers guests the perfect balance of central convenience and a peaceful retreat, allowing them to immerse themselves in the city's timeless beauty, exquisite architecture, and renowned cultural treasures.

Venice is a city like no other, famed for its labyrinth of canals, elegant bridges, and historic palazzi. The Grand Canal winds through the heart of the city, lined with centuries-old buildings that reflect in the shimmering water, creating a scene of unparalleled beauty. Strolling along the narrow streets and over the iconic Rialto Bridge, visitors are immersed in the vibrant life of Venice, where cafés, artisan shops, and bustling markets bring the city to life.

St Mark's Square is the beating heart of Venice, dominated by the stunning Basilica di San Marco with its gilded mosaics and intricate domes. Nearby, the Doge's Palace enchants with its Gothic splendour and richly decorated interiors, offering a glimpse into the city's illustrious past. Gondola rides along the serene canals provide a unique perspective of Venice's charm, from hidden courtyards to quiet waterways lined with ornate façades, capturing the romantic essence of this extraordinary city.

Beyond the landmarks, Venice is a city of culture and artistry. The Peggy Guggenheim Collection and the Gallerie dell'Accademia showcase masterpieces spanning centuries, while the Teatro La Fenice hosts world-class opera and performances. Charming neighbourhoods such as Dorsoduro and Cannaregio invite exploration, with quiet squares, local eateries, and artisan boutiques revealing the authentic Venetian lifestyle. Every corner of Venice tells a story, making it a truly magical destination for all who visit.

Venetian Palace is 14 km from Venice Marco Polo Airport, 123 km from Verona Villafranca Airport (also known as Valerio Catullo Airport), 156 km from Bologna Guglielmo Marconi Airport, 259 km from Milan Linate Airport, and 311 km from Milan Malpensa Airport. The palazzo is just 1,2 km on foot from the very centre of Venice. Treviso is 42 km from the property, Padua 47 km, Vicenza 75 km, Verona 121 km, Mantua 156 km, and Lake Garda 183 km.

The Property

Venetian Palace is close to some of the city's major attractions yet slightly off the beaten track, offering a welcome retreat in Venice. Located on the first floor of the palazzo, Cannella Apartment features stylish furnishings and great attention to detail. Offering an impressive sense of comfort and abundant natural light, this exceptionally designed and cosy apartment exudes an elegant and sophisticated atmosphere. Cannella Apartment can accommodate two guests in one double bedroom with a private bathroom.

Venetian Palace is a 15th-century palazzo with luxurious apartments ranging from 40 to 150 square metres. Designed to be a comfortable home-from-home, it is ideal for both couples and families. Conveniently positioned near the San Tomà boat stop and a short walk from the Grand Canal and the Basilica dei Frari, Venetian Palace enjoys a privileged location in the heart of Venice. Popular restaurants and bars can be found in the immediate vicinity.

Welcoming guests in a refined atmosphere, Cannella Apartment offers a double bedroom complete with a private bathroom with shower, located just outside the room. Flooded with natural light, the apartment also features a cosy lounge area with comfortable armchairs offering plenty of seating. Decorated in soft, neutral tones, the apartment includes a fully equipped kitchen with a dining area and a lounge area with a comfortable sofa.

Measuring 50 square metres, the apartment immediately enchants with its imposing yet soothing atmosphere. Extraordinary coffered ceilings and tall windows contribute to a sense of grandeur. Muted earth tones are offset by touches of crimson red in the embroidered Bevilacqua cushions and Murano

glass light fittings. Two large windows overlooking the courtyard bathe the space in light, which extends into a designer kitchen with bespoke cabinetry and a counter with bar stools.

In the bedroom, sumptuous fabrics in shades of red adorn the king-size bed. Exposed ceiling beams in natural tones add warmth, contributing to a soft and inviting glow. Murano glass wall sconces and table lamps shimmer at sunset, creating a kaleidoscopic effect. The apartment's interiors combine natural and luxurious fabrics, pairing fine Italian cotton with Venetian embroidered silks, resulting in a stunning display of contemporary elegance.

PHOTOS

