

Property 1651263715



Number of beds: 4
Bedrooms: 2

Bathrobes and Slippers

Bathrobes and slippers available for each guest.

Pets Allowed

Small pets are allowed on request at no extra cost.



Air Conditioning Throughout

Included in the rental price.



Air Conditioning In The Bedrooms

Included in the rental price.



Hair Dryer In The Bathrooms



Dryer

Safe

Safe box available in all bedrooms.



Fibre Internet

The Villa is Less Than 15 km From a Golf Course

The apartment is about 15 km from the Ugolino Golf Club.

The maximum distance from the city centre is 1.5 km

The apartment is located in the center of Florence, about 50 meters from Ponte Vecchio.



Dishwasher



Washing Machine

Mattress sizes and bed dimensions

2 Double bedrooms with king-size beds.

Bath amenities

Algotherm complimentary toiletries with weekly refill.

Nearby

The apartment is close to the following restaurants: Canto del Ramerino, Osteria Bocca Negra, Enoteca Panchiorri, Baldovino Bistrot, Cibreo Trattoria, Foody Farm, La Managere, Il Locale, and Mercato Centrale. The apartment is about 100 meters from La Congrega Lounge Bar, a 3-minute walk from Credem bank, 6-minute walk from Conad City supermarket, and a 7-minute walk from Al Ponte Vecchio Pharmacy.



Heating

Included in the rental price.



Concierge Service

Concierge service available on the phone from 10:00 am to 6:00 pm. Included in the rental price.



Housekeeping

Maid service, every three days (rooms and bath cleaning service). Included in the rental price.

Smart TV



Satellite TV



City Views



Wi-Fi

Insect Screens

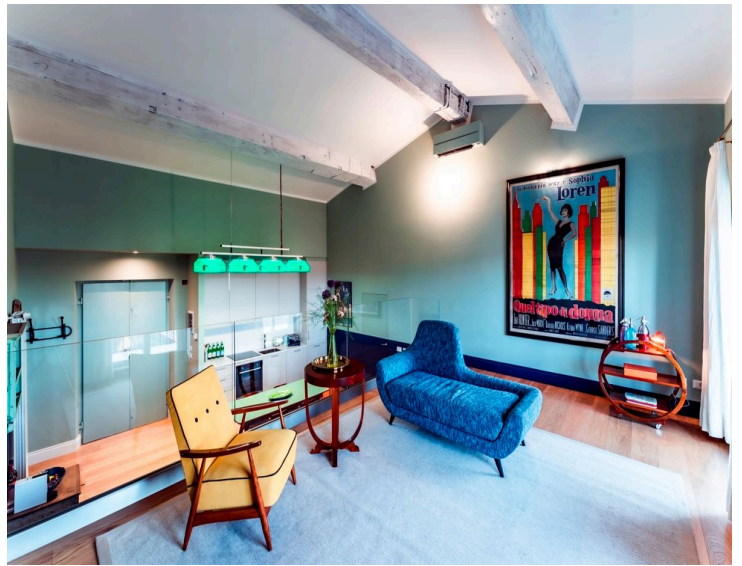
*** Please note:** the included amenities may vary according to final agreement, make sure to check your contract for complete list.

NEARBIES

Arno View is 11 km from Florence Amerigo Vespucci International Airport, 80 km from Pisa Galileo Galilei International Airport, and 309 km from Rome Leonardo da Vinci International Airport. Overlooking the Arno River, the apartment is near the very centre of Florence and just a 10-minute walk from Cattedrale di Santa Maria del Fiore. Impruneta is 15 km from the property, San Gimignano is 52 km, Siena is 71 km, Lucca is 79 km, Volterra is 75 km, Pisa is 85 km, and Livorno is 91 km.

FEATURES

- 2 Double Bedrooms
- 2 Private Bathrooms with Shower
- Fully-Equipped Kitchen with Dining Table
- Elegant Living Room with a Smart TV
- Furnished, Panoramic Balcony
- Espresso Coffee Machine and Kettle
- Stylish, Contemporary Furnishings
- Located in Florence's Limited Traffic Zone (ZTL)



DESCRIPTION

Property 1651263715 - FLORENCE

2 Bedrooms

Location and Surrounding Area

Located on the second floor of a palazzo near the very centre of Florence and steps from the most exclusive dining, shopping, and entertainment options, this unique apartment is the perfect place for a stylish break in one of the most beautiful cities in Italy. From the 13th to the 15th centuries, Florence was the undisputed capital of culture and art in Europe. A few days are enough to discover its wealth of architectural and artistic treasures, as well as to enjoy all the other delights of this charming Tuscan city.

Florence's reputation as an art city is unparalleled. The Duomo is the heart of Florence and is very easy to locate. Just look for the high terracotta dome that dominates the city's skyline. The area around the Duomo is pedestrianised and usually crammed with tourists. The easiest way to get around this area, with its flat streets and wide pavements, is on foot. There are a few cafés and ice-cream parlours in and around the square, handy for a rest from sightseeing.

The Uffizi art gallery is just off Piazza della Signoria, where a replica of Michelangelo's David stands tall over spectacular fountains beside the stately Palazzo Vecchio. The long loggia of the gallery connects the piazza to the Arno River. It is a short walk from the mediaeval Ponte Vecchio, the oldest bridge in Florence, lined with jewellery shops. The surrounding streets and squares, though thronged with visitors, offer plenty of options for exceptional meals, drinks, and ice cream.

The Uffizi is one of Italy's greatest art galleries. It covers the full sweep of Florentine art, from stylised Byzantine icons to the flowing lines of early mediaeval art, through Renaissance masterpieces to the colourful complexities of Mannerist art. Do not attempt to see every painting. Instead, see how many animals can be spotted in a painting or stick to highlights by the most famous Italian artists, such as Giotto, Botticelli, Piero della Francesca, Leonardo, and Michelangelo.

The sprawling 16th-century Boboli Gardens, a fine example of Italian Renaissance gardens adjoining the vast hulk of Palazzo Pitti in the Oltrarno district, are the green lungs of the city. Laid out in formal glory, they provide a refreshing break from the city streets. After the gardens, the narrow lanes of Oltrarno offer plenty of great local restaurants and old-fashioned workshops. The area gives an insight into how the Florentines live, away from the tourist honeypot across the river.

Arno View is 11 km from Florence Amerigo Vespucci International Airport, 80 km from Pisa Galileo Galilei International Airport, and 309 km from Rome Leonardo da Vinci International Airport. Overlooking the Arno River, the apartment is near the very centre of Florence and just a 10-minute walk from Cattedrale di Santa Maria del Fiore. Impruneta is 15 km from the property, San Gimignano is 52 km, Siena is 71 km, Lucca is 79 km, Volterra is 75 km, Pisa is 85 km, and Livorno is 91 km.

The Property

Located on the second floor of a building that once housed public figures such as Raphael and Lord Byron, Arno View boasts stylish contemporary furnishings and great attention to detail. With an impressive sense of comfort and plenty of natural light, this exceptionally designed apartment offers a modern and sophisticated atmosphere. Featuring a balcony overlooking the Arno River and all accommodations on one level, Arno View can accommodate four guests in two double bedrooms.

Welcoming guests with its sophisticated atmosphere, this 90-square-meter apartment includes two double bedrooms, each with its own private marble bathroom with a large shower. Please note that the bathroom in one of the bedrooms is located just outside the room. Flooded with light, the apartment also features a fully-equipped kitchen with a dining table and an elegant living room with a smart TV and sofas. The furnished balcony overlooks the famous Ponte Vecchio. Please note that there are some steps to access the rooms.

Please be aware that the apartment is located within Florence's Limited Traffic Zone (ZTL). This means that vehicle access is restricted to authorised residents and requires special permission. To enter the ZTL area, you will need to notify the parking authorities of your vehicle's license plate number and your

intended entry times in advance. This is essential to avoid any fines or complications during your stay. For further assistance with parking arrangements and to ensure a smooth visit, feel free to contact us.

PHOTOS



