

## Property 10563



**\* Please note:** the included amenities may vary according to final agreement, make sure to check your contract for complete list.

**Number of beds:** 8  
**Bedrooms:** 4

## NEARBIES

Lungarno Apartment is 10 km from Florence Amerigo Vespucci Airport, 79 km from Pisa Galileo Galilei Airport, and 105 km from Bologna Guglielmo Marconi Airport. Prato is 24 km from the property, Greve in Chianti is 30 km, Panzano in Chianti is 36 km, Vinci is 43 km, Castellina in Chianti is 41 km, Montecatini Terme is 51 km, San Gimignano is 53 km, Siena is 71 km, Lucca is 79 km, Arezzo is 81 km, Volterra is 82 km, Pisa is 83 km, Livorno is 89 km, and Bologna is 107 km, and Montalcino is 109 km.

## FEATURES

- 4 Bedrooms (3 Double Rooms + 1 Twin Room)
- Well-Equipped Kitchen
- Living Room with an Original Fireplace
- Open-Plan Layout with Modern Dining Area
- Spacious Terrace
- Wooden Decking Area with Outdoor Furniture
- Outdoor Dining Area
- Microwave and Dishwasher
- Flat-Screen Satellite TV
- Air Conditioning and Heating in All Rooms
- Lift



# DESCRIPTION

## Property 10563 - FLORENCE

### 4 Bedrooms

#### Location and Surrounding Area

Property 10563 is perfectly located in the heart of Florence, placing guests just steps away from iconic landmarks like the Duomo, Uffizi Gallery, and Ponte Vecchio. With such a central position, you can easily explore the city's rich history, art, and culture, while also enjoying the charming cafés, shops, and restaurants nearby. The apartment offers a peaceful retreat yet is within walking distance of Florence's most famous attractions, making it the ideal base to experience the best of this beautiful city.

From here, guests can easily explore Florence's most iconic landmarks, strolling through its cobbled streets, Renaissance treasures, and lively cafés. Just moments away, the Duomo dominates the skyline, its marble façade and Brunelleschi's dome standing as symbols of the city's artistic grandeur. Art lovers can admire Botticelli's Birth of Venus at the Uffizi Gallery or marvel at Michelangelo's David in the Accademia Gallery. A walk across the Ponte Vecchio, with its jewellery boutiques, offers a glimpse into Florence's rich past.

Beyond its artistic wonders, Florence captivates with its grand piazzas and green spaces. The Piazza della Signoria, an open-air museum of sculptures and historic buildings, is a perfect spot to soak in the city's energy. For a quieter escape, the Boboli Gardens offer manicured lawns, fountains, and shady paths. To take in the full beauty of Florence, a climb to Piazzale Michelangelo rewards visitors with breathtaking views over the city's rooftops and rolling Tuscan hills.

As evening falls, Florence reveals its most romantic and atmospheric side. The streets glow with lantern light, and the scent of traditional Tuscan cuisine fills the air. Elegant wine bars and trattorias serve pappardelle with wild boar ragù, handmade pecorino ravioli, and the famous bistecca alla fiorentina, perfectly paired with fine Chianti wines. Whether discovering its history, indulging in its food, or simply soaking in its unique charm, Florence offers an experience that stays with you long after you leave.

Property 10563 is 10 km from Florence Amerigo Vespucci Airport, 79 km from Pisa Galileo Galilei Airport, and 105 km from Bologna Guglielmo Marconi Airport. Prato is 24 km from the property, Greve in Chianti is 30 km, Panzano in Chianti is 36 km, Vinci is 43 km, Castellina in Chianti is 41 km, Montecatini Terme is 51 km, San Gimignano is 53 km, Siena is 71 km, Lucca is 79 km, Arezzo is 81 km, Volterra is 82 km, Pisa is 83 km, Livorno is 89 km, and Bologna is 107 km, and Montalcino is 109 km.

#### The Property

Nestled in the heart of Florence, the birthplace of the Italian Renaissance, Property 10563 offers an exceptional blend of elegance and comfort. The apartment's large terrace, spanning 140 square metres, is surrounded by lush vegetation and overlooks the terracotta rooftops, domes, and spires that are synonymous with Florence's iconic skyline. This stunning 130-square-metre apartment is perfect for families or groups of up to 8 guests, offering four beautifully furnished bedrooms.

The outdoor space is one of the apartment's highlights. The expansive wooden decking area is equipped with stylish outdoor furniture, providing the ideal setting for relaxation. A dining table comfortably seats eight, making it perfect for al fresco meals, whether in the warmth of the day or under the stars, illuminated by candlelight. The terrace, surrounded by greenery, offers a serene escape, while the breathtaking views of Florence's rooftops and historic landmarks create an unforgettable atmosphere.

Inside, the apartment boasts a spacious and bright living room, elegantly furnished with a cosy sofa, armchairs, and an original fireplace. The open-plan layout flows seamlessly into the modern dining area and well-equipped kitchen, allowing for easy dining and entertaining. The kitchen is fitted with all the essentials, including a microwave and dishwasher. The living area, complete with a flat-screen satellite TV, opens out onto the terrace through double windows, blending indoor and outdoor living to perfection.

The four bedrooms are designed with relaxation in mind. Three are double rooms, each furnished in soft, calming colours and adorned with art pieces that create an inviting atmosphere. The fourth bedroom is a twin room, offering versatility for families or friends. All rooms are equipped with air

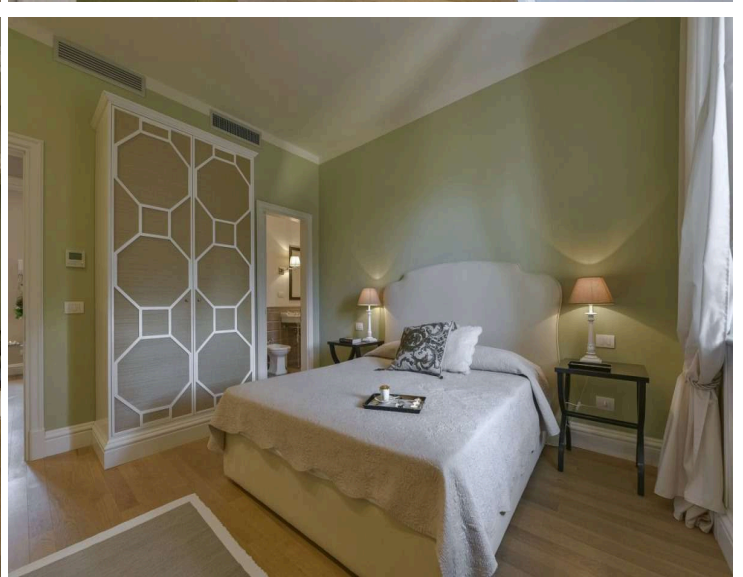
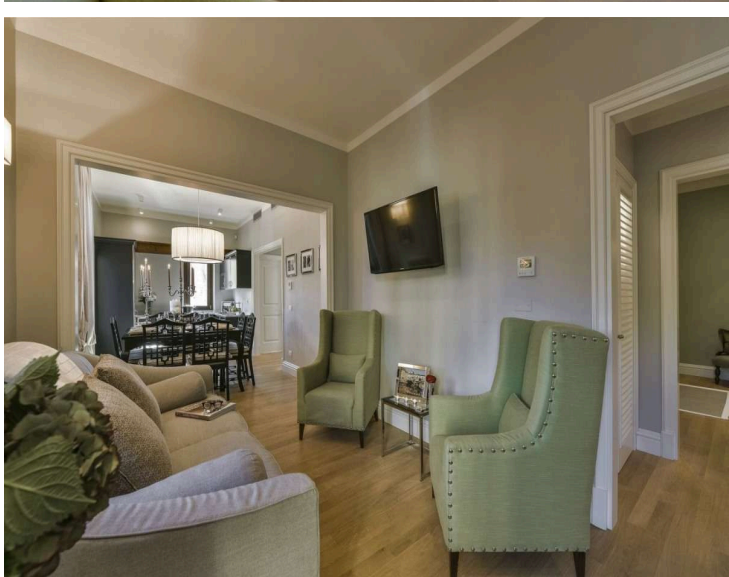
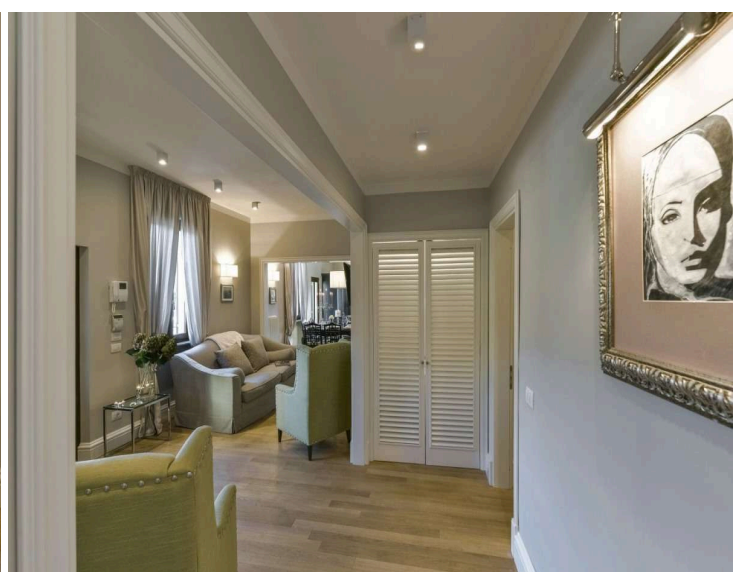
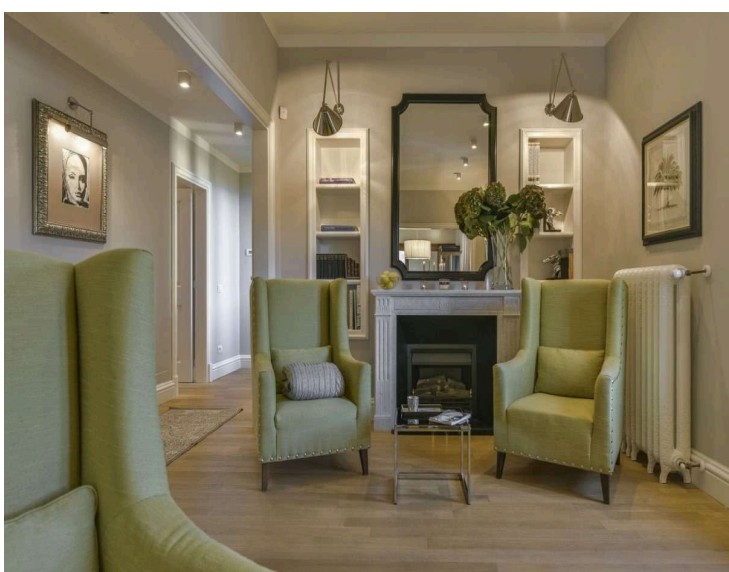
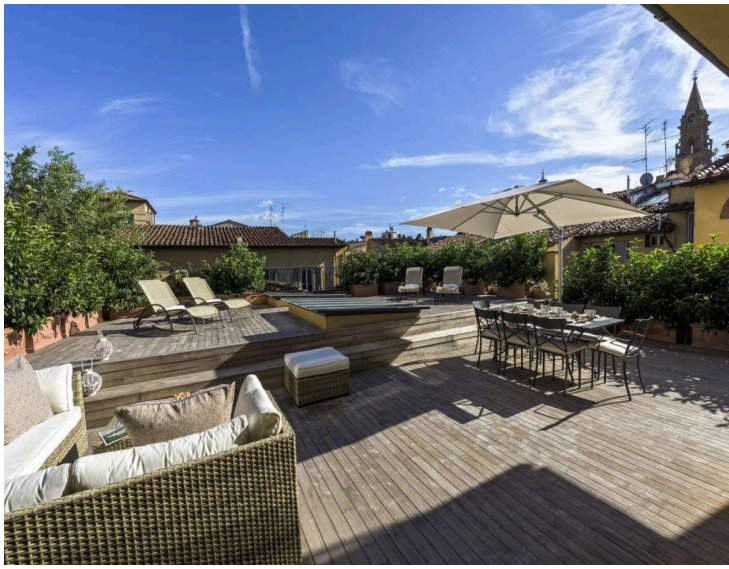
conditioning, heating, and satellite TV, ensuring a comfortable and enjoyable stay. Wooden floors throughout add warmth, while large windows allow natural light to fill the space, creating a bright and airy environment.



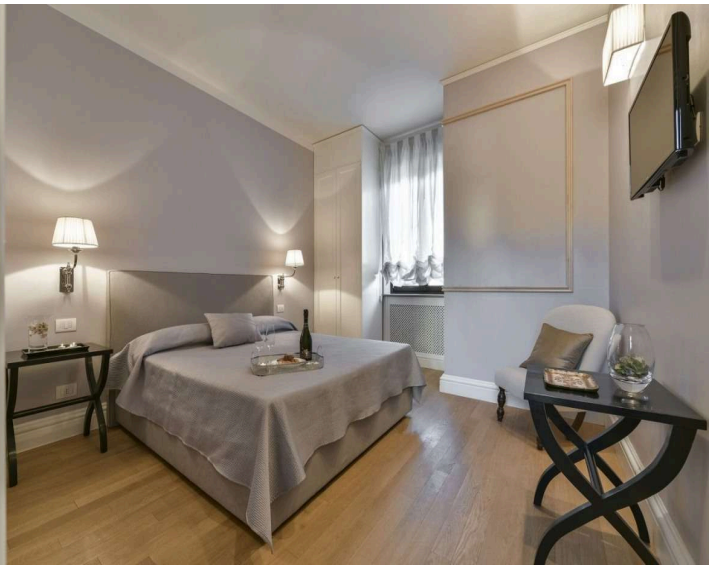
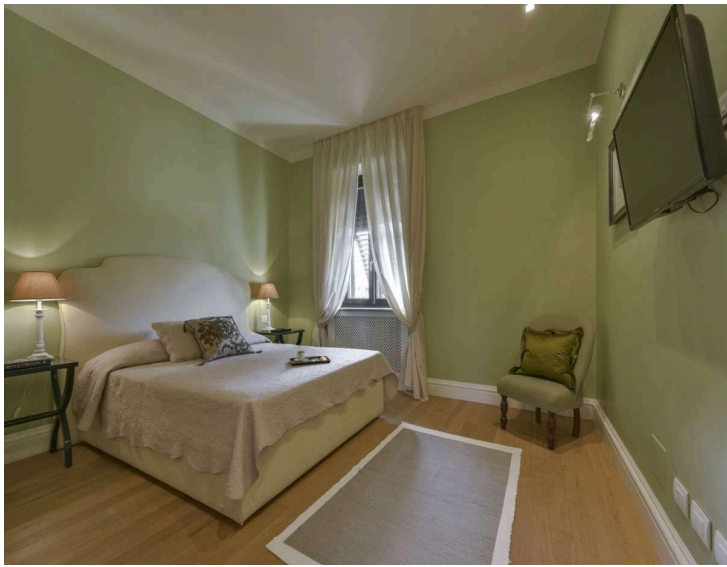
PHOTOS



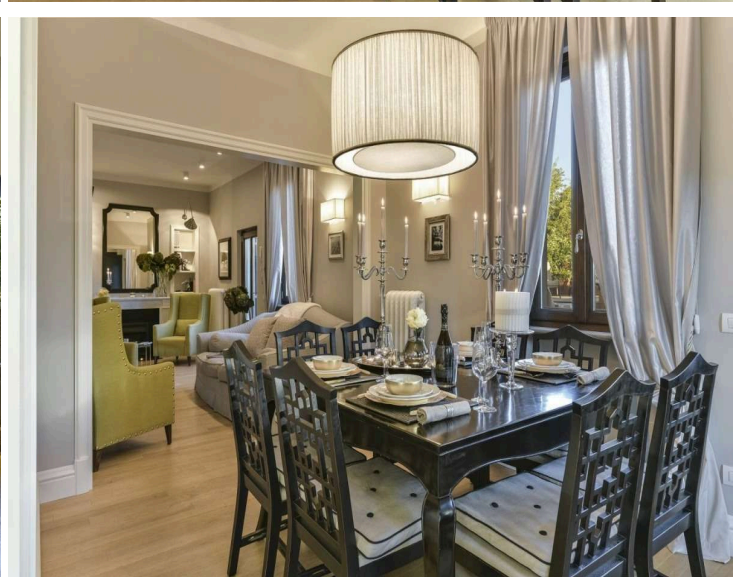
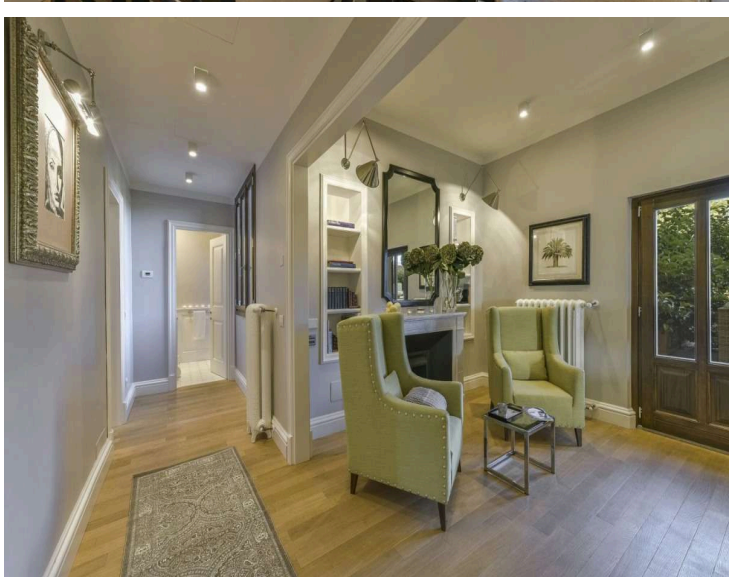
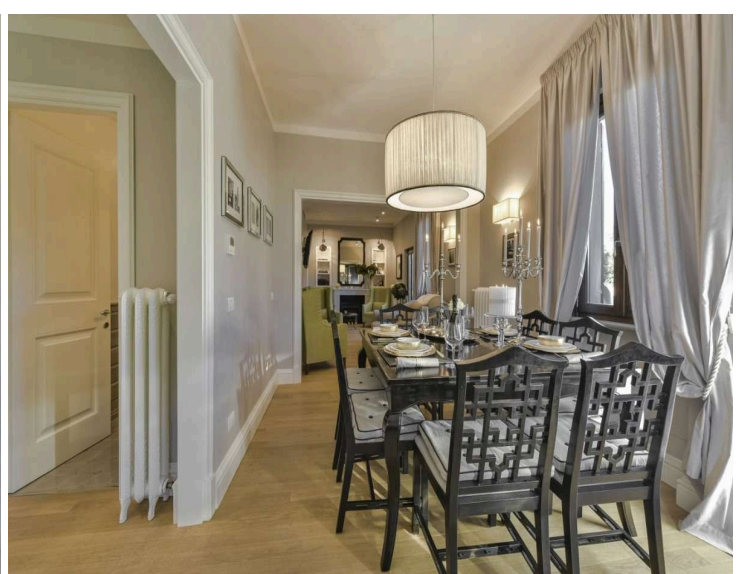
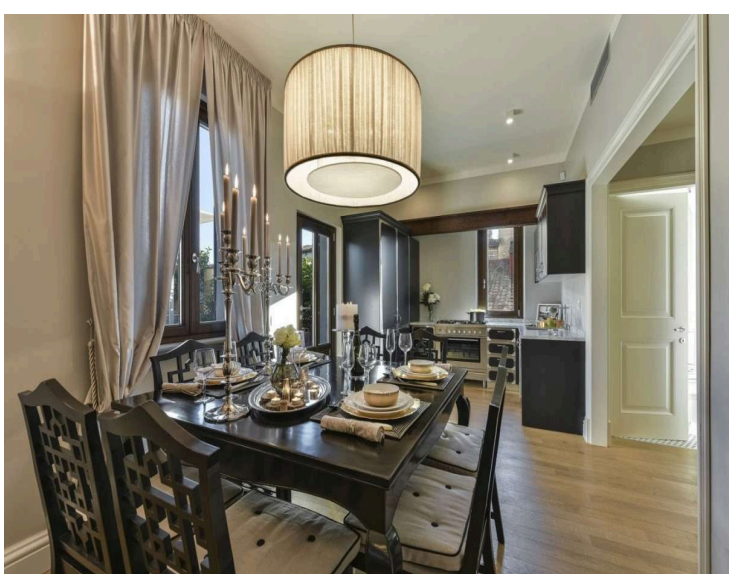
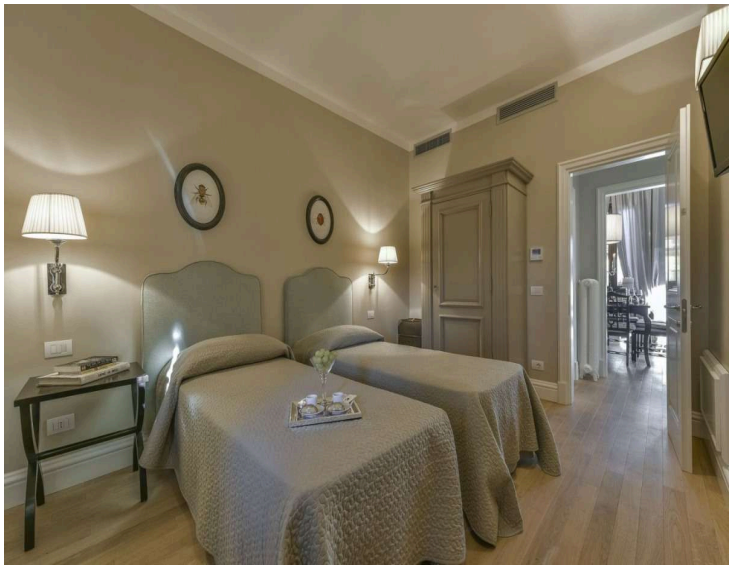




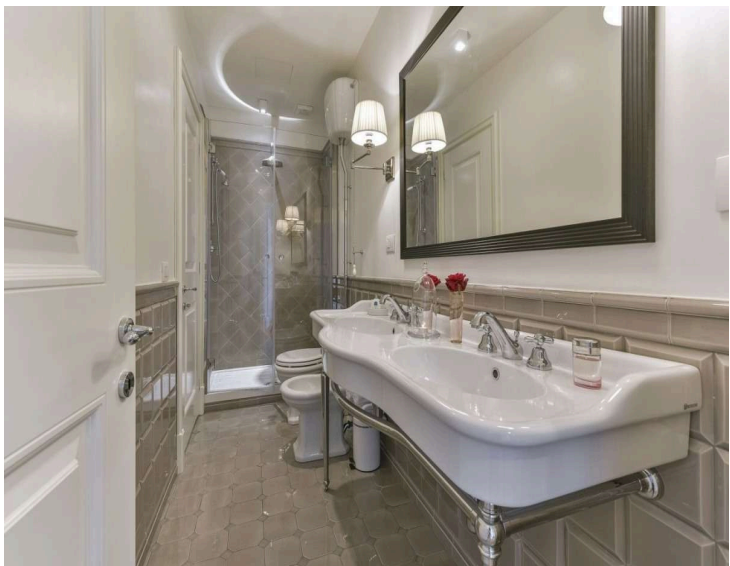
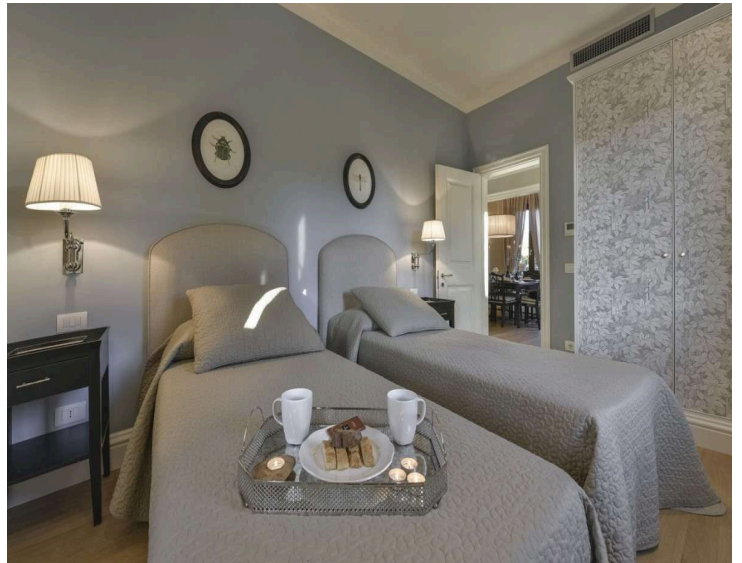
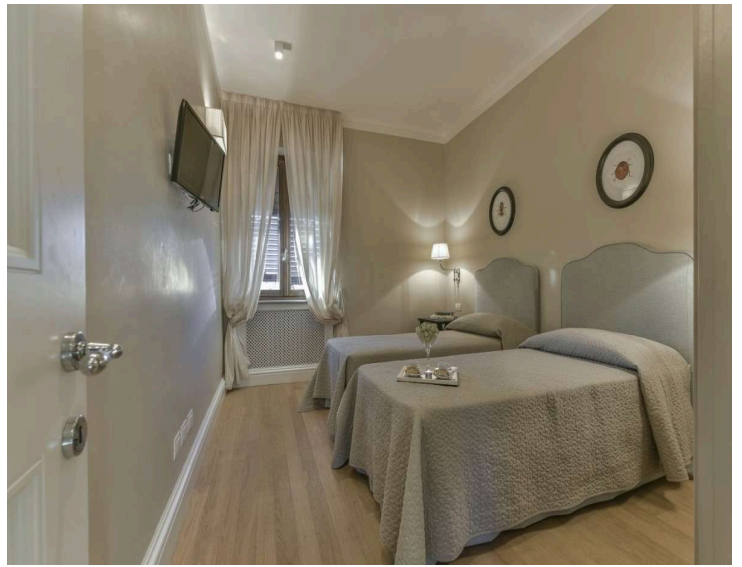




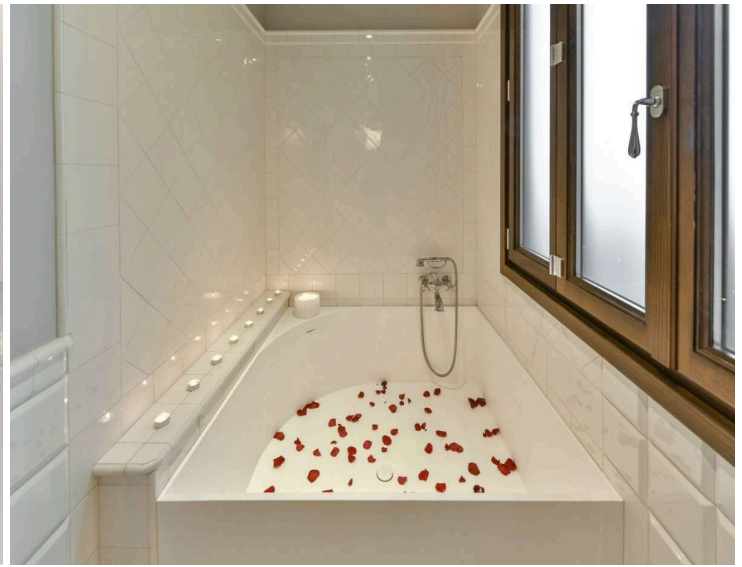


















## Living in our fashioned historical palace

BEDROOMS

LIVING ROOM

OUTDOOR TERRACE

